

# **elproLOG CONFIG**

## **Operation Manual**




## Table of contents


<b>1. Introduction to elproLOG CONFIG</b> .....	4
<b>2. Icons - Menus - Functions</b> .....	5
2.1 Icons .....	5
2.2 Menus - Functions .....	7
<b>3. Procedure</b> .....	9
3.1 Identification .....	10
3.2 Communication .....	11
3.3 Password.....	12
3.4 Sensor Settings .....	13
3.4.1 Sensor.....	14
3.4.2 Digital Input .....	15
<b>4. Scheduler</b> .....	16
<b>5. Error messages</b> .....	17
5.1 Configuration Files Prior elproLOG CONFIG Version 3.50 .....	17
5.2 Configuration Files elproLOG CONFIG Version 3.50 .....	17
5.3. Information for Customer Support.....	17

## Used Symbols & Designation Key

 Notes

 **IMPORTANT INFORMATION OR WARNING**

 Reference to resuming chapter [xxx / yyy / zzz; e.g. 2.2 *Menus - Functions / Group / Add*] or document

 In the interest of our customers, we reserve the right to make any changes resulting from technical advances. Therefore, schemes, descriptions and extent of delivery are subject to change without any notice!


This manual is valid as from software release 3.6x

# 1. Introduction to elproLOG CONFIG

These elproLOG CONFIG functions are used to setup a datalogger as a part of your LAN or WLAN structure. With elproLOG CONFIG data logger can be organized into groups and various configurations done.

elproLOG USER



To control user access, all entries are supervised by elproLOG USER.  Operation manual SU3001E

## The following functions are part of the software:

- Enables to configure groups of logger in the network
- Displays tabular representation of the datalogger network
- Provides the ability to add or remove dataloggers
- Allows you to configure each datalogger including:
  - Datalogger or sensor enable / disable
  - Assigning names for sensors
  - Connection over LANs
  - IP addresses
  - Clear text information like: sensor name, warning limit values, type and position
- Printouts for documentation



The dataloggers ECOLOG-NET are not able to respond to multiple accesses at the same time, therefore use just one of the following software products at the same time: elproLOG CONFIG, elproLOG ANALYZE or elproLOG MONITOR!

## 2. Icons - Menus - Functions

The following functions are available in the elproLOG CONFIG software:

### 2.1 Icons

#### File



Create a new group; file ending is ".gcf" for group configuration file



Open an existing group



Save the current group



Print out a report of the current location

#### Group



Add a new group



Rename the selected group



Remove the selected group

## Datalogger



Add a new datalogger



Remove the selected datalogger



Edit the properties of the selected datalogger



Check the connection of the selected datalogger (Ping command)

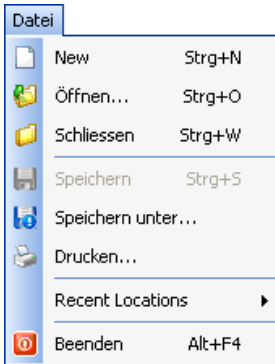
 [3.2 Communication](#)

## Using Help



*Start Help*

## 2.2 Menus - Functions



File - is used to create a new configuration, to load an existing one and to get printouts.

If you save a group configuration file for the first time, the proposal for the file name corresponds to the name of the first group. Regardless whether the group configuration file has been saved under a different file name or not, at the next opening of this file, elproLOG CONFIG shows the name of the first group and not the file name in the title bar.

Example

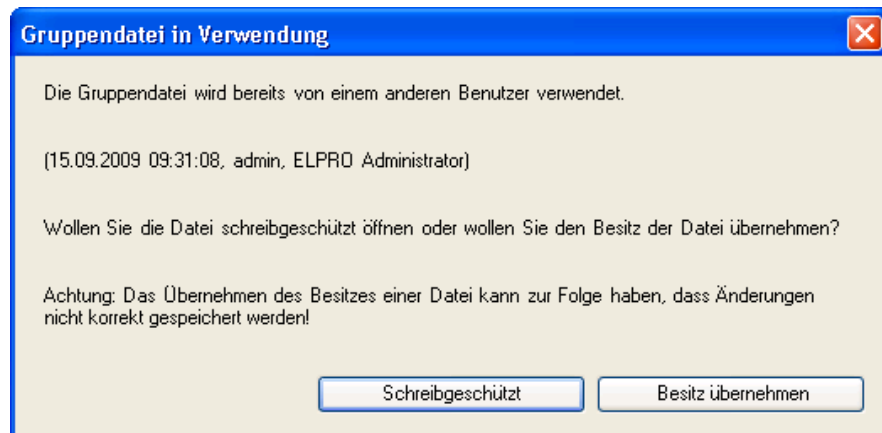
File name: Elpro

Name of the first group: Building 1


Title bar: elporLOG CONFIG [Building 1]

### Open an already open group configuration file

A gcf file can not be opened by a second user. He is going to get the message, this file is already in use by user XY. The file can be opened with "Read Only" or with "Take Ownership".

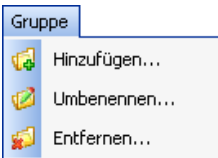


- Read Only  
Changes to the file can not be stored in the original file.
- Take Ownership  
The write protection on the file is removed and you are able to change the original file and save it.

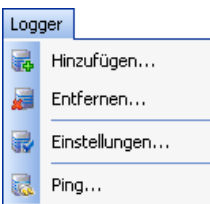
 Attention: Prior taking ownership, get in touch with user XY, because changes made so far will be lost.



Allows to change the application language between English and German




The group menu is used to define groups, change the name or delete them



### Add - Remove - Properties

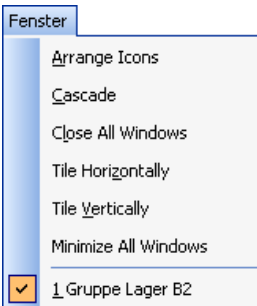
These functions are used to setup a new logger in LAN.

 3. Procedure / Step 2: Logger Propertie Settings

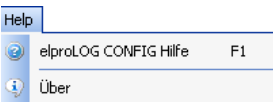
### Ping

It is a tool which is used to check the network settings of the logger and the network connection.

 3.2 Communication



Functions to organize your pc screen.



Detailed information about the installed software version.

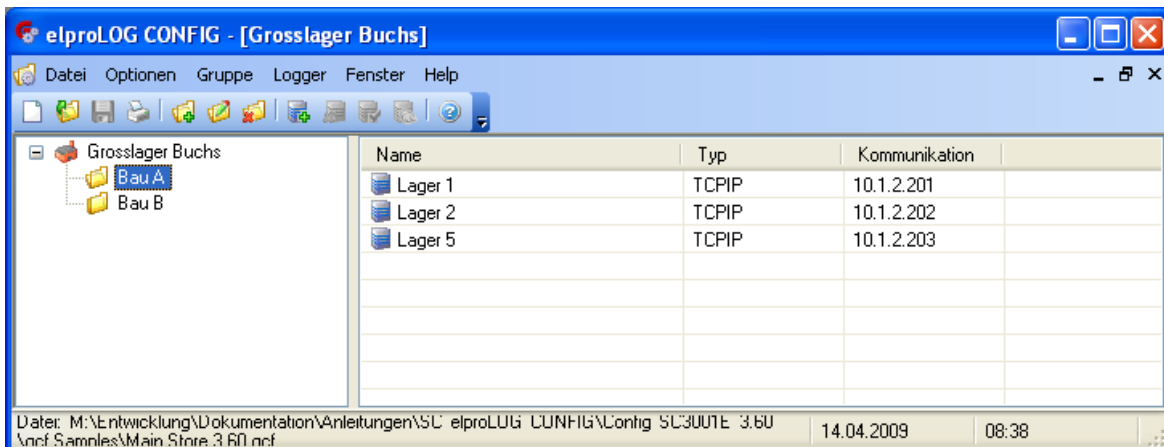


### 3. Procedure

To define a group of dataloggers in LAN, the following 2 steps are required.

This function is used to select a datalogger and to configure it or to add it into a group of dataloggers. For any definitions of datalogger properties, the datalogger has to be selected in the following window.

#### Step 1: Group- and Logger- Data







Project: Production D  
 Group: Store D1 & Store D2

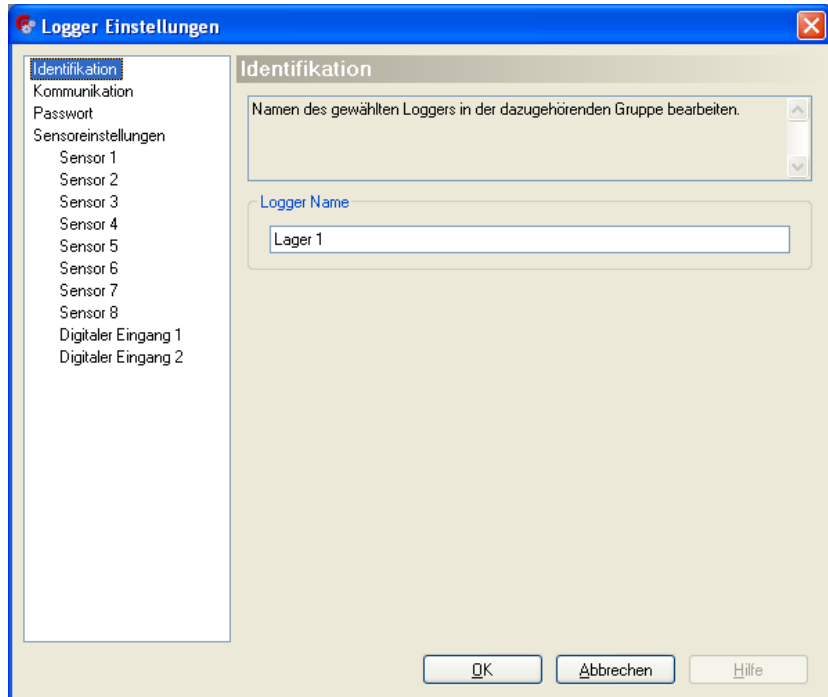
By double clicking the "Name" of the datalogger in the "Group and Logger data" window, the "Logger Properties" window appears.

#### Step 2: Logger Propertie Settings

The following 4 functions are used to define the necessary parameters for a running datalogger in a LAN environment.

-  3.1 Identification
-  3.2 Communication
-  3.3 Password
-  3.4 Sensor Settings

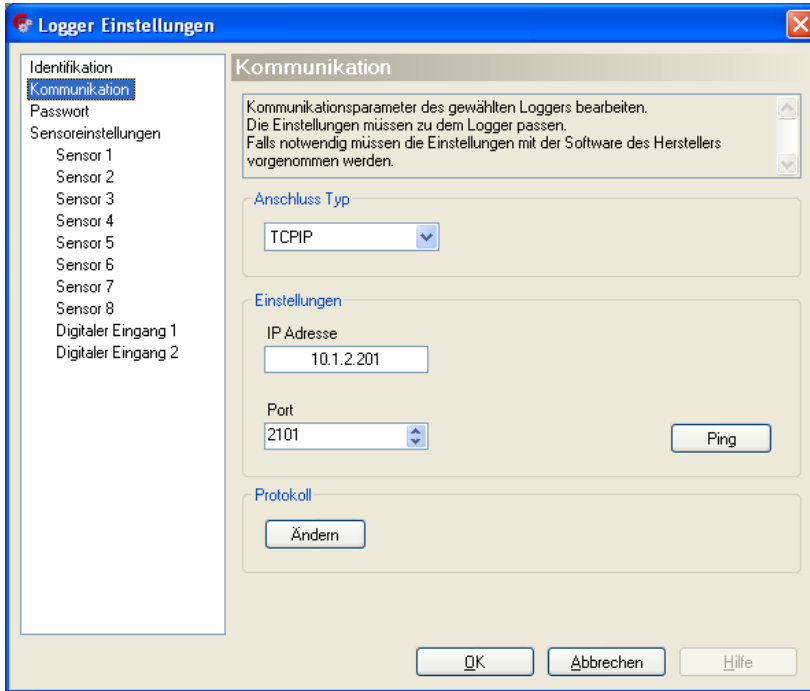
### 3.1 Identification



**Logger name**

This line is used to assign a name

### 3.2 Communication



- TCP/IP is used for LAN operation
- RS232 is used for local operation

**Interface type**

This is the address of the current datalogger

**IP address**

This is the TCP/IP communication port used by all elproLOG software modules.

**Port = 2101**

It is a tool which is used to check the network settings of the logger and the network connection.

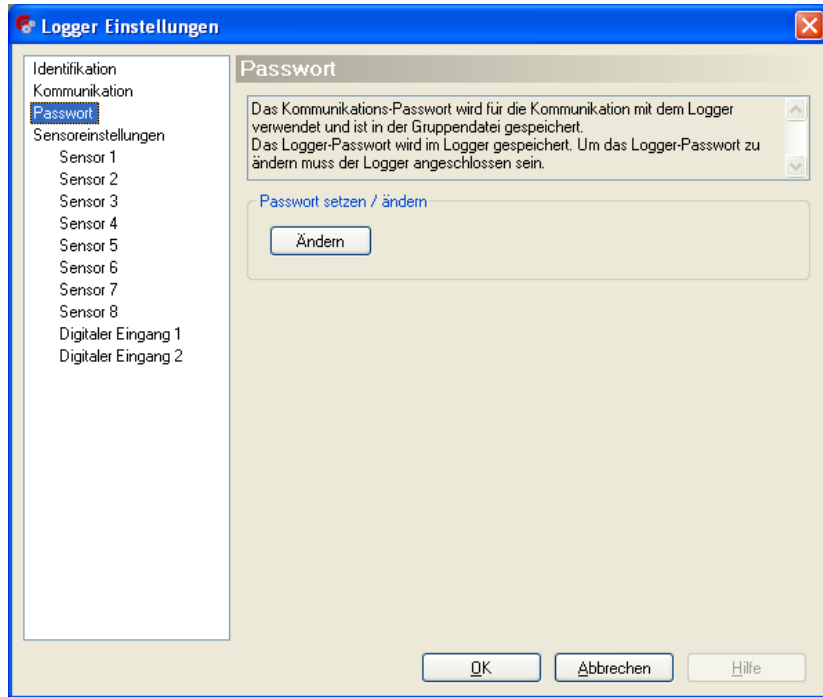
**Ping**

Only with administrator rights possible

ECOLOG-NET uses Hotseries4

**Protocol**

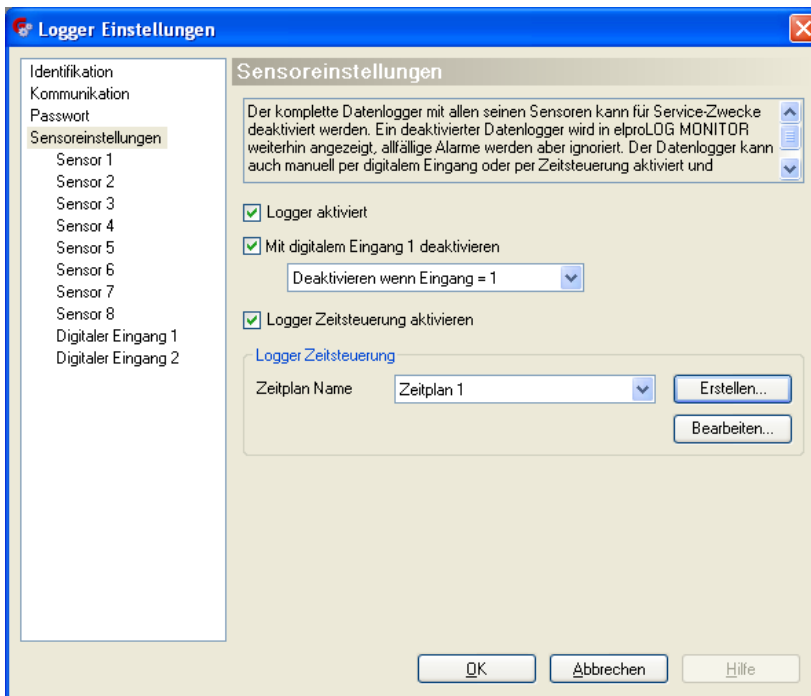
### 3.3 Password



#### Set / change password

The password protects all datalogger configurations done by elproLOG CONFIG.

### 3.4 Sensor Settings




This screen shot has been taken from an ECOLOG-NET LA8 . (8 Sensors)



The following functions allow the control over the logger alarm behavior.

If this check box is selected, the data logger will be enabled for the alarm function of elproLOG MONITOR.

#### Enable Logger



As long as the logger is not enabled, settings regarding the sensors and digital inputs are not possible.  
A disabled datalogger will be represented by elproLOG MONITOR but ignored by the warning / alarm functions.

For service tasks the settings of digital input 1 (status information e.g. service mode) could be used to avoid unwanted alarms.


#### Disabled by Digital input 1

- 1 Alarm function is disabled if the external contact is closed.
- 0 Alarm function is disabled if the external contact is open.

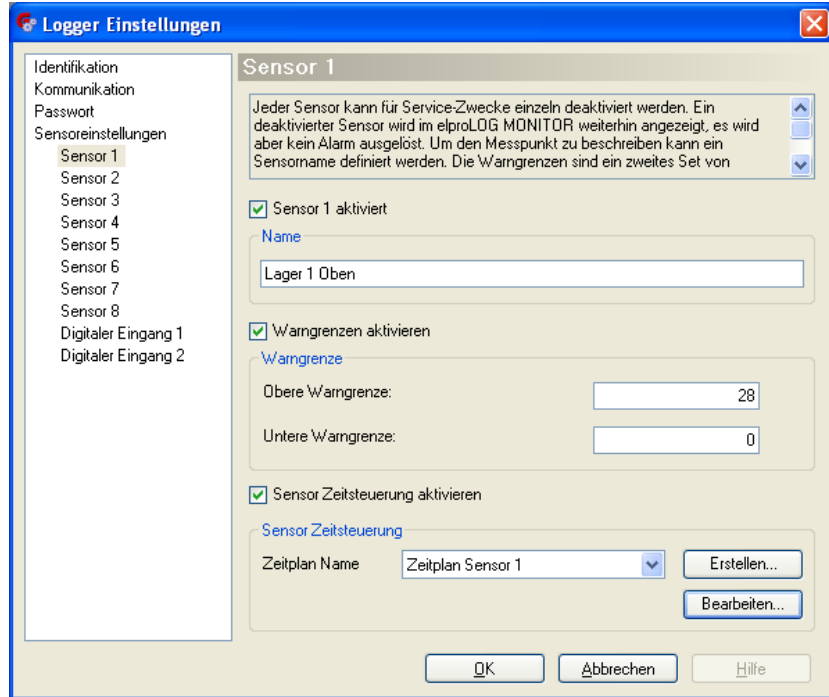
#### Disabled when Input = ...

**Enable Logger Scheduler**

The scheduler provides a time-control of the logger warning- and alarm function

 4. Scheduler

**3.4.1 Sensor**



**Enable Sensor**

Sensor is supervised by elproLOG MONITOR.

**Application Name**


Identification name of the sensor

**Enable Warning Level**

Data logger independent limit values, which will be registered as warnings and not as alarms.

**Enable sensor scheduler**

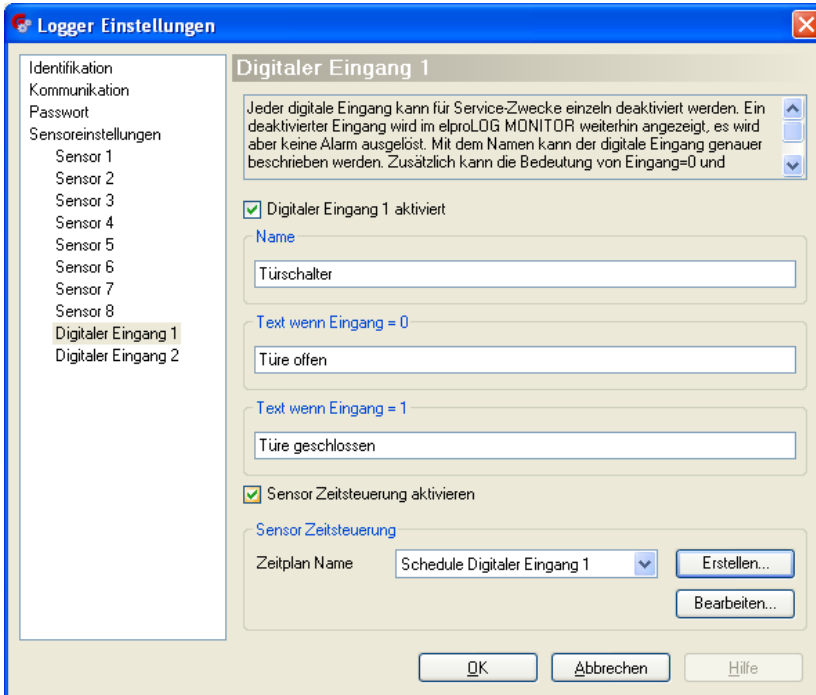
The scheduler provides a time-control of the selected sensor warning / alarm functions.

 4. Scheduler



A disabled sensor will be represented by elproLOG MONITOR but ignored by the warning / alarm functions.

### 3.4.2 Digital input



Digital input (contact of an external switch) which shall be supervised by elproLOG MONITOR. These settings require an enabled logger

#### Enable Digital Input

3.4 Sensor Settings

Identification name of the digital input

#### Application Name

0 Alarm message text if this contact is open

#### Text when Input =....

1 Alarm message text if this contact is closed

The scheduler provides a time-control of the selected digital input alarm function

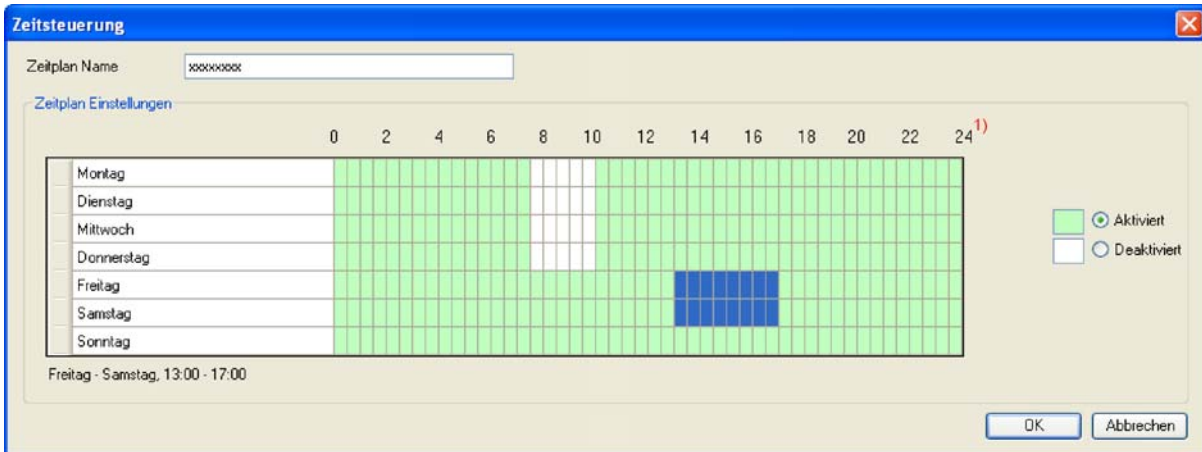
#### Enable sensor scheduler

4. Scheduler

A disabled digital input will be represented by elproLOG MONITOR but ignored by the warning / alarm functions.

## 4. Scheduler

The scheduler is used to provide a day time dependant controll over the monitored warning / alarm functions of elproLOG MONITOR. Several independent schedules for each datalogger may be defined.



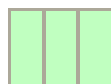
### 1. Time axis

*It is not possible to change the resolution of the time grid*



To change the status of a particular field, mark it with the mouse pointer and change the status by clicking onto the corresponding button.

### Representation colors



Warning / alarm function is enabled



Warning / alarm function is disabled



Marked for status change



## 5. Error messages

### 5.1 Group configuration file prior elproLOG CONFIG Version 3.50

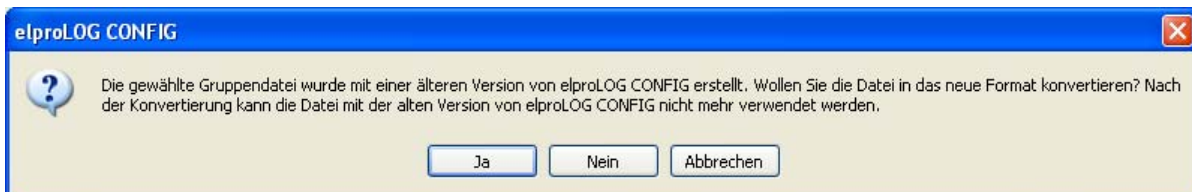


These group configuration files could not be used by elproLOG CONFIG versions 3.50 or newer.

If the configuration information of such a file is important, you have to reinstall the old version and printout all settings with the print function.

 2.2 Menus - Functions / File / Print

### 5.2 Group configuration file, elproLOG CONFIG Version 3.50



By confirming this message, the group configuration file will be updated to version 3.60 automatically

### 5.3 Information for Customer Support

If you need further assistance from the ELPRO - Customer support, supply us with the following information please:

- Version number of the software  
The software is delivered on a CD-ROM with the following designation: 3.x.y  
The current version number of the software is shown by the ReadMe file.
- version and type of the used operating system.

Select in the menu "Help" the menu item "Info".



- Designation of the used elproLOG ANALYZE application and / or datalogger, with which problems arise.
- Do the same problems arise with other elproLOG ANALYZE application and / or datalogger?
- Which were the preceding actions, before problems arose (exact description of your datalogger application: time, temperature, shock .....).
- Exact definition of the error occurred: copies of the status report, the graphic and the communication history or send us an email containing the read-out data if possible.

## Index

### A

Alarm message 15

### C

Communication protocol 11

Customer Support 17

### D

Datalogger name 10

Digital input 13, 15

### E

elproLOG USER 4

Enable Logger 13

Enable Sensor 14

External switch 13, 15

### F

File name 7

### G

Group Configuration File 7

Group name 7

### L

Login 4

### O

Old group configuration file 17

### P

Ping 8, 11

### R

Read Only 7

### S

Scheduler - Digital input 15

Scheduler - Logger 14

Scheduler - Sensor 14

### T

Take Ownership 7

TCP/IP 11

TCP/IP default port 11

## Document revision history

Author	Date	Version	Description
A. Gubler	13.07.2007	--	First release Replacement of EN6002Ej, Chapter 3
A. Gubler	25.04.2009	a	Reworked for version 3.6x
A. Gubler	16.09.2009	b	Function: Write protected gcf file







(Head Office)

**ELPRO-BUCHS AG**

Langäulistrasse 62  
CH-9470 Buchs SG

**Switzerland**

email: [swiss@elpro.com](mailto:swiss@elpro.com)



**ELPRO Messtechnik GmbH**

Baumwasenstrasse 20/1  
D-73614 Schorndorf

**Germany**

email: [brd@elpro.com](mailto:brd@elpro.com)



**ELPRO Services Inc.**

210 Millcreek Road  
P.O. Box 727  
Marietta, OH 45750

**USA**

email: [usa@elpro.com](mailto:usa@elpro.com)

**ELPRO UK Ltd.**

Unit 1, Allen's Yard  
Nyton Road, Aldingbourne  
Chichester West Sussex PO20  
3UA

**United Kingdom**

email: [uk@elpro.com](mailto:uk@elpro.com)

**[www.elpro.com](http://www.elpro.com)**