

# elproLOG MONITOR-WebUpload

Operation Manual



# Table of contents

<b>1. Introduction</b> .....	4
1.1 System requirements.....	4
<b>2. Installation</b> .....	5
<b>3. Working with elproLOG MONITOR-WebUpload</b> .....	8
3.1 Icons .....	8
3.2 Menus .....	8
3.3 Program Window .....	9
3.4 Tools - Options.....	9
3.4.1 Basic Settings.....	9
3.4.2 FTP Server .....	10
3.4.3 Folders.....	10
<b>4. General</b> .....	11
4.1 Information for ELPRO - Customer Support .....	11
4.2 Revision History .....	11

## Used symbols & identification codes



Information



**IMPORTANT INFORMATION OR WARNING**



Reference to further chapter

Reference to resuming chapter [xxx / yy / zzz; e.g. 3.4 *Tools - Options* or document



In the interest of our customers, we reserve the right to make any changes resulting from technical advances. Therefore, schemes, descriptions and extent of delivery are subject to change without any notice!

This manual is valid as from elproLOG MONITOR-WebUpload 1.0x

# 1. Introduction

## Version

The software is delivered on a CD-ROM, labeled as follows: 1.0x The ReadMe file shows the current version number of the software.



The elproLOG MONITOR-WebUpload software will be used to transfer periodically elproLOG MONITOR log files to a Webserver. It is used to specify the folders where the log files are stored and for the configuration of the used Webserver.

elproLOG MONITOR-WebUpload is not required in cases where the Web-Server and the monitoring PC are running within the same network.

## 1.1 System requirements

- PC with Internet access and browser
- elproLOG MONITOR version 3.50 or higher.



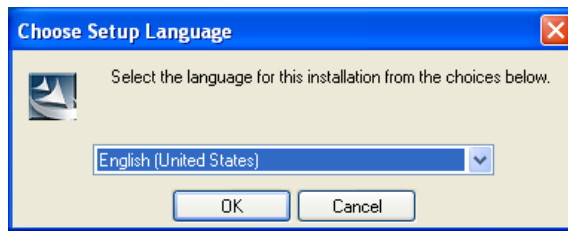
"Administrator" rights are required to make a successful installation.

## 2. Installation

1. Insert the CD into the CD-ROM drive.
  - The CD uses an auto run function so the installation routine should start automatically.
  - If this is not the case, open the Windows Explorer and switch to the CD-ROM drive. To install the software, double-click with the left mouse button on "Elpro.exe".

 Elpro.exe

Information about the software version, history and features see the "ReadMe File"



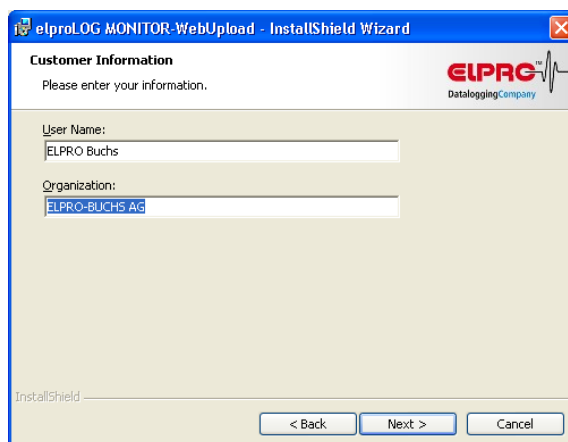
2. Select the language of the installation program and continue the installation by pressing "OK".



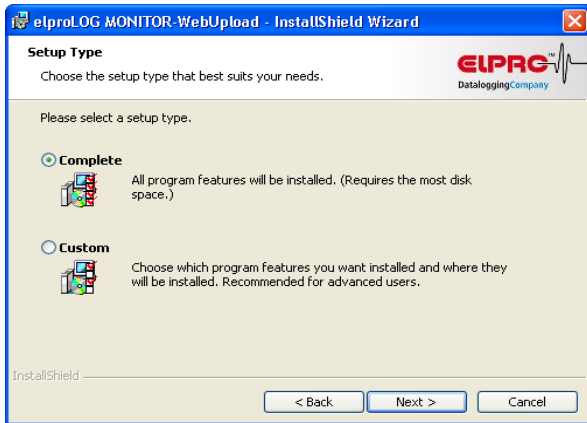
3. Continue the installation by pressing "Next"



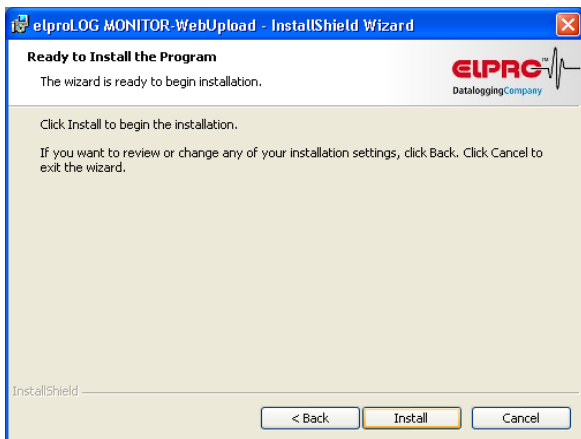
4. Continue the installation by accepting the license agreement by pressing "Yes".



5. If not updated automatically by the system, continue the installation by typing in username and organization.




6. Install the software package "Complete".



7. Continue the installation by pressing "Install".



8. Continue the installation by pressing "Finish".

After the installation has been completed, you may work with elproLOG MONITOR-WebUpload;  
 3. Working with elproLOG MONITOR-WebUpload

## 3. Working with elproLOG MONITOR-WebUpload

### 3.1 Icons



Starts software elproLOG MONITOR-WebUpload



Upload of data was successful



Upload of data failed




Upload of data is under progress



elproLOG MONITOR-WebUpload is waiting for the next upload of data cycle. The cycle time (Scheduler) is preset in 3.4.1 *Basic Settings*.

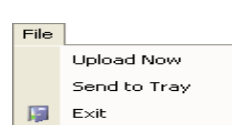





This icon will be visible as soon as the option window has been opened  3.4 *Tools - Options*. There will be no data transfer as long as this window is open.



Displayed in the elproLOG MONITOR-WebUpload status bar only!

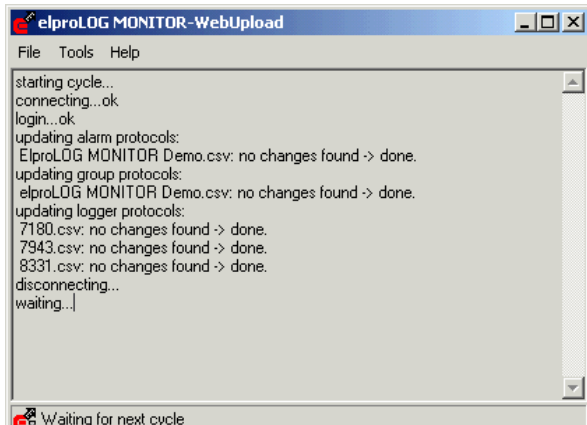
### 3.2 Menus

	Upload Now	Starts manual update immediately
	Send to Tray	Closes the program window and shows the program status with the appropriate icon in the system tray. Double-clicking the icon in the system tray opens the window again.
	Exit	Terminates the program
	Options	Opens configuration windows for: <ul style="list-style-type: none"> <li>- Basic Settings</li> <li>- Web server configuration</li> <li>- Folders</li> </ul>  3.4 <i>Tools - Options</i>
	Index	Starts help
	About	Detailed information about the installed software version.



### 3.3 Program Window

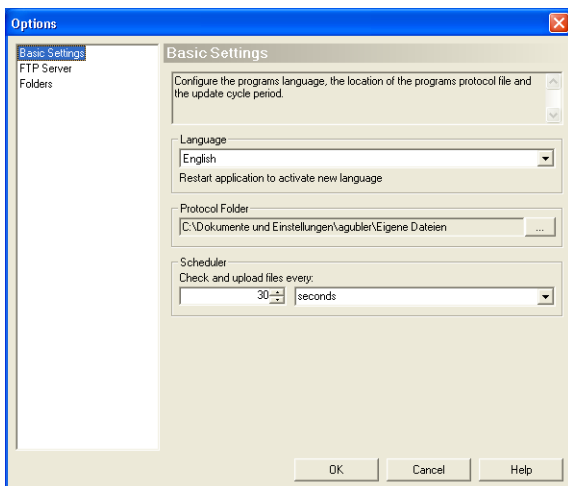
The program window is going to show all actions carried out by elproLOG MONITOR-WebUpload:



### 3.4 Tools - Options

The sub menus contain all settings that are required to configure elproLOG MONITOR-WebUpload.

#### 3.4.1 Basic Settings



Application language English and German are available.

**Language**

Path to the elproLOG MONITOR-WebUpload protocol file. This file contains all errors occurred during run time. The protocol starts with: "Program started" and ends with: "Program terminate".

**Protocol Folder**

**Example of a protocol file**

```

08.01.2008 18:52:53 Program Program started
08.01.2008 19:41:45 FTP Server Could not connect to server. (xxxxx:21)
09.01.2008 11:20:22 FTP Server Xceed.Ftp.FtpTimeoutException: The FTP command
execution timed-out.

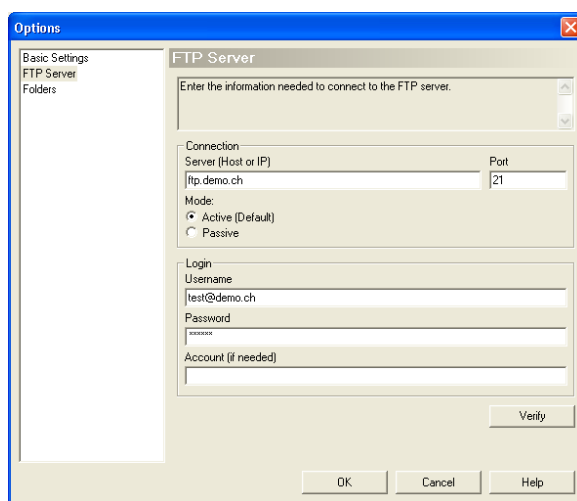
.....

10.01.2008 10:00:18 Program Program terminated
08.01.2008 18:52:53 Program Program started
    
```

**Scheduler**

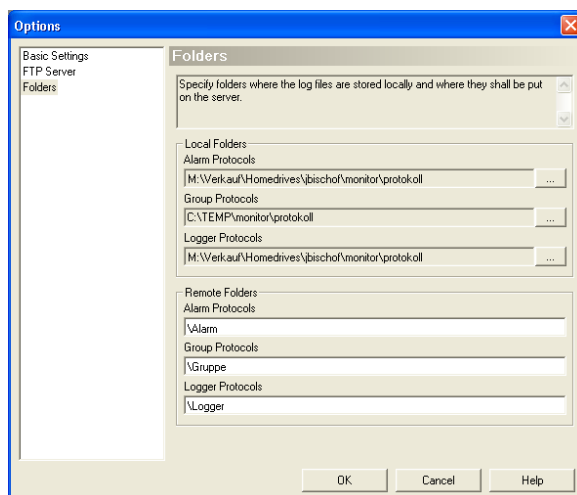
Timing of the file data uploads.  
 In the preset interval, the elproLOG MONITOR files are checked. Only files, which have been changed since the last cycle, are transferred.

**3.4.2 FTP Server**



Configuration off all settings required for the FTP-Servers connection.

**3.4.3 Folders**



This window is used to define all folders and their paths.


The "Remote Folders" are located on the server

## 4. General

### 4.1 Information for ELPRO - Customer Support

Please have the following information ready when you contact ELPRO customer support:

- Software release number.
- Which were the preceding actions, before problems arose

*In menu "File", select  
menu item "Info".* 

### 4.2 Revision History

Author	Date	Version	Description
JB	30.08.2006	-	First edition
JB	29.01.2007	a	Change of format
AG	10.01.2007	b	Small changes

# Index

## **C**

Cycle time 10

## **D**

Data transfer 8

## **E**

elproLOG MONITOR-WebUpload 4

## **F**

Folders 9, 10

## **I**

Information for customer support 11

## **P**

Program 9

Protocol file 9, 10

## **S**

Server 4, 10

## **U**

Upload time 10







(Head Office)  
ELPRO-BUCHS AG  
Langäulistrasse 62  
CH-9470 Buchs SG  
Switzerland  
email: [swiss@elpro.com](mailto:swiss@elpro.com)



ELPRO Messtechnik GmbH  
Baumwasenstrasse 20/1  
D-73614 Schorndorf  
Germany  
email: [brd@elpro.com](mailto:brd@elpro.com)



ELPRO Services Inc.  
210 Millcreek Road  
P.O. Box 727  
Marietta, OH 45750  
USA  
email: [usa@elpro.com](mailto:usa@elpro.com)

ELPRO UK Ltd.  
Unit 1, Allen's Yard  
Nyton Road, Aldingbourne  
Chichester West Sussex  
PO20 3UA  
United Kingdom  
email: [uk@elpro.com](mailto:uk@elpro.com)

[www.elpro.com](http://www.elpro.com)  
[www.pdf-datalogger.com](http://www.pdf-datalogger.com)