

# elproLOG USER


Operation Manual



# Table of contents


<b>1. Introduction to elproLOG USER</b> .....	4
1.1 1st startup of elproLOG USER.....	4
1.2 Login .....	5
1.3 Update .....	5
1.4 Organization Levels .....	5
<b>2. Menus and Icons</b> .....	6
<b>3. User</b> .....	8
3.1 Add / Edit User.....	8
3.1.1 User Data .....	8
3.1.2 Account Details.....	9
3.1.3 Membership .....	10
<b>4. Group</b> .....	11
4.1 Add / Edit Group .....	11
4.1.1 Group Data .....	11
4.1.2 Access Rights.....	12
4.1.3 Members.....	13
<b>5. Tools</b> .....	14
5.1 Documentation.....	14
5.1.1 Example of an access rights documentation .....	15
5.1.2 Example of a user accounts documentation.....	16
5.2 Import Application-Set.....	17
5.3 Settings .....	18
5.3.1 Program Settings.....	18
5.3.2 Security Settings.....	19
5.3.3 User Database.....	19
<b>6. Information for Customer Support</b> .....	20
6.1 Database Error Messages .....	20
6.2 Loss of Password.....	20


# Used symbols & designation key

	Information
---	-------------

	<b>IMPORTANT INFORMATION OR WARNING</b>
---	---

Reference to further chapter

 Reference further resuming chapter [xxx / yyy / zzz; e.g. 3.1.2 *Account Details* / Title / PC time] or document

	In the interest of our customers, we reserve the right to make any changes resulting from technical advances. Therefore, schemes, descriptions and extent of delivery are subject to change without any notice! This manual is valid as from software release 1.0x
---	---

# 1. Introduction to elproLOG USER

This application is used to assign user access rights on all installed elproLOG ANALYZE software modules.

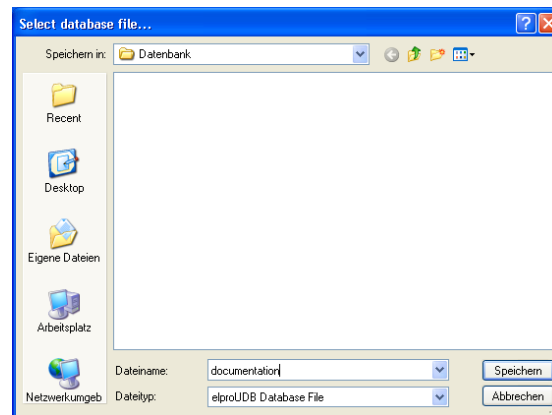
**The following functions are part of the software:**

- Setup of a database to manage access rights for elproLOG ANALYZE software modules
- Setup of user groups and single users
- Control over user related software functions

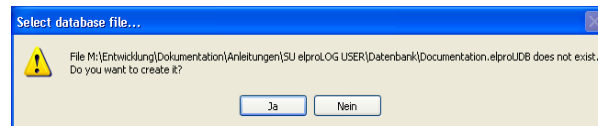
## 1.1 1st startup of elproLOG USER

### Setup of a new database

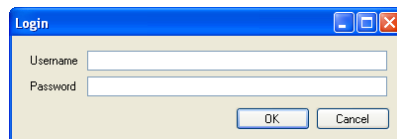
At the 1st start of elproLOG USER, one is asked for the database which should be used.



1. Select the location where the database should be store
2. Enter the name of the database

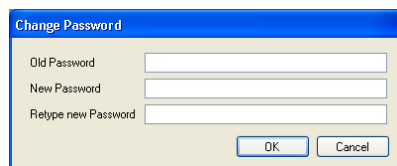


3. Confirm this message  
Result: The database will be available now and the login window appears.



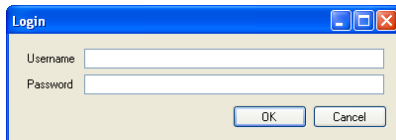
4. To start elproLOG USER use:  
Username: admin  
Password: elpro

*The new password requires at least 6 characters (default value)*



5. As soon as the login was successful, you are asked to enter a personalized password. Otherwise the application will be closed.

## 1.2 Login




[Password configuration](#)  
[5.3.1 Program Settings](#)

Any time elproLOG USER is started, the login window appears.

## 1.3 Update

In case of a new released elproLOG ANALYZE software module, the ReadMe file of this particular software contains information about the status of the application-set. To update elproLOG USER the new application-set has to be imported.

 After setting up of a new database, the application-sets of all used elproLOG ANALYZE software modules have to be imported.

 [5.2 Import Application-Set](#)

## 1.4 Organization Levels

To handle the access rights, elproLOG USER operates with 2 different organization levels: User & Group

A user has access to all elproLOG ANALYZE software modules and their functions which are assigned to the "Group" he belongs to. The administrator has the possibility to define password and access properties of this particular user.

**User**

- admin  
Member of the "Default Supervisors" group

**Default user**


Handles the access rights on different elproLOG ANALYZE software modules.

**Group**

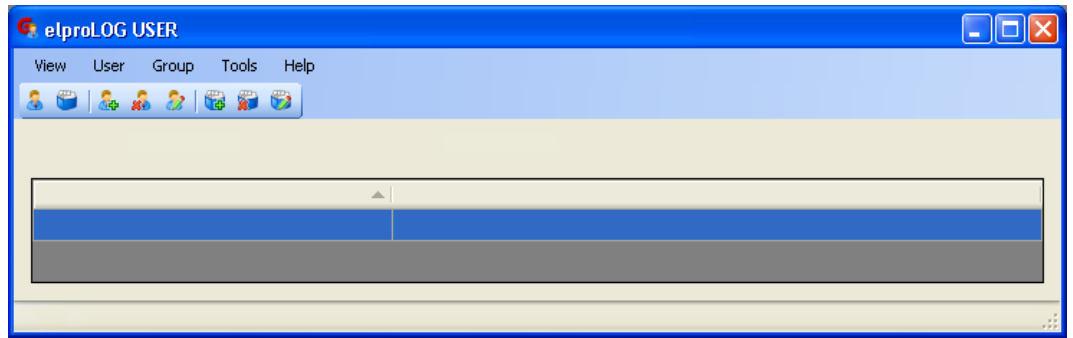
- Default Operators  
This group has no access on elproLOG USER. It represents the group where operators are members.
- Default Supervisors  
This group has no access on elproLOG USER, therefore all access rights on the available elproLOG ANALYZE software modules could be assigned. Only the administrator should be a member!

**Default groups**

Usually used access rights for supervisors and users are assigned to the default groups. These default groups might be changed, replaced by customised groups or deleted. By importing a new application-set, the access rights of the default user groups could be set back to factory defaults.

 [2. Menus and Icons / View](#)

## 2. Menus and Icons



### View

The "View" icons and menu allow switching between the group and user functions.

#### Icon

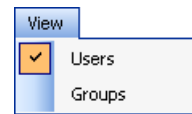


View Users




View Groups

#### Menu



### User

The user functions could be selected by the "User" icons or menu.

 3. User

#### Icon



Add

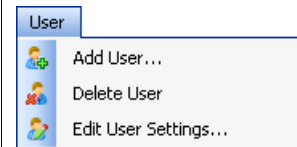


Delete




Edit

#### Menu



### Group

The group functions could be selected by the "Group" icons or menu.

 4. Group

#### Icon



Add

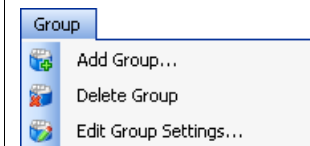


Delete




Edit

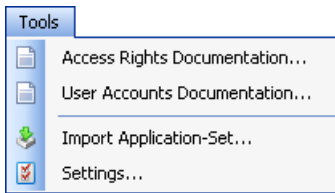
#### Menu



Several functions for setting up of elproLOG USER and documentation of the setup


## Tools

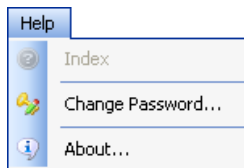
 5. Tools



- Detailed information about the installed software version
- Possibility to change the password

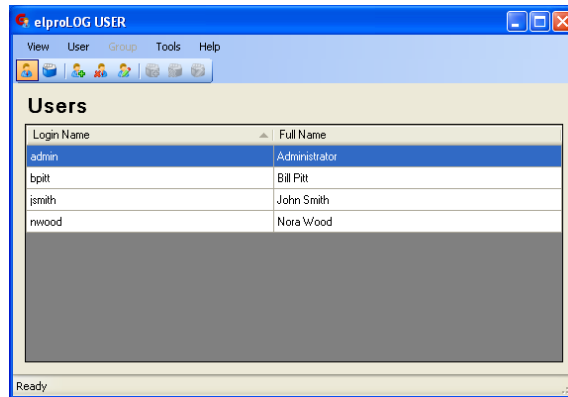
## Using Help

 1.1 1st startup of elproLOG USER / Password



## 3. User

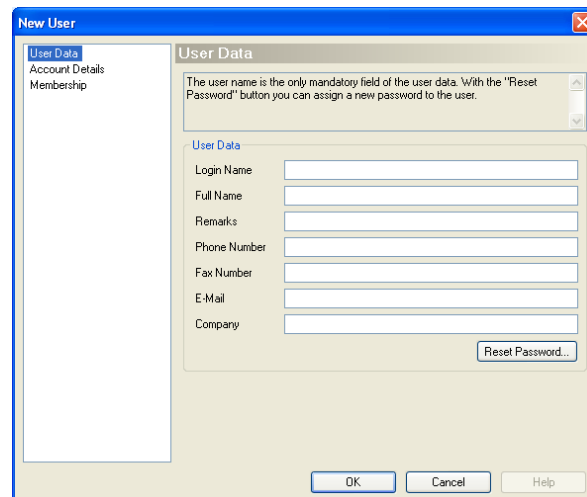
Defaultuser:admin 



### 3.1 Add / Edit User



#### 3.1.1 User Data



The user name is the only mandatory field of the user data. With the "Reset Password" button you can assign a new password to the user.

**User Data**

Login Name

Full Name

Remarks

Phone Number

Fax Number

E-Mail

Company

**Login Name**  
**Full Name**

Only this information is mandatory

This information will be documented within the audit trail of elproLOG ANALYZE QLS and in elproLOG EVENT. We would therefore recommend to fill it out.

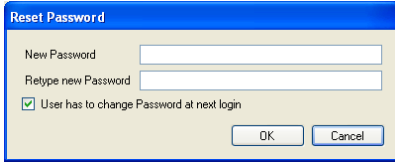
**Remarks....**  
**Company**

These information are used for documentation purpose only



Used to assign a new user password

**Password reset**

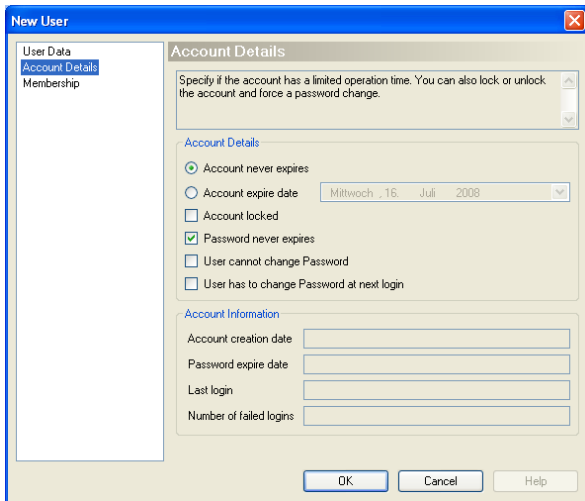


For password requirements 5.3.2 Security Settings

*Check box  
By selecting this check box, the user is forced to assign a personalized password at the next login.*

**3.1.2 Account Details**

*These are user related settings*



Possibility to limit the logging period of e.g. temporary user. If this date has been expired, this user is not able to login into the assigned applications anymore.

**Account expire date**

- Account could be locked by the administrator
- Unlock of the account in case of multiple incorrect logings.

**Account locked**

If it is NOT selected, the password expire date according to "Account Information" is used

**Password never expires**

For "Password expire date" and "Number of failed logins"

**Account Information**

5.3.2 Security Settings

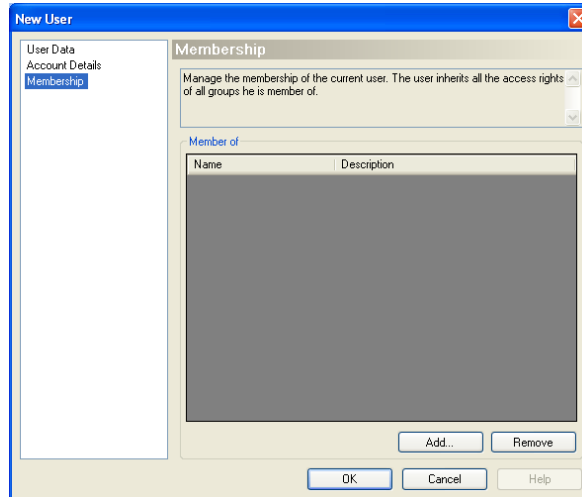
### 3.1.3 Membership



**FOR SECURITY REASONS, A USER SHOULD NEVER BE A MEMBER OF GROUPS WHERE THE SOFTWARE "ELPROLOG USER" IS ONE OF THE SELECTED APPLICATIONS.**

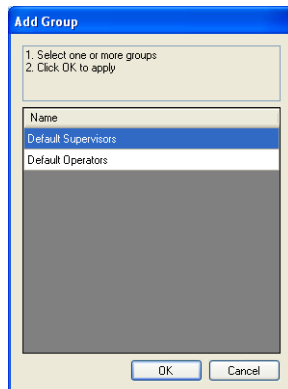
 **4.1.2 ACCESS RIGHTS**


A user may be a member of several groups. The access rights are cumulative.



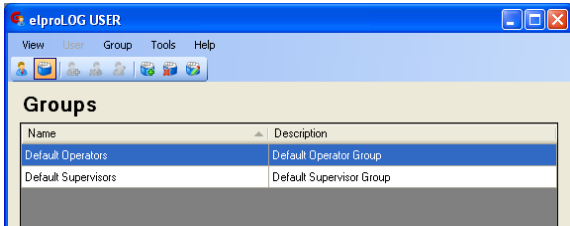
#### Button "Add..."


Prior a group could be assigned to a user, at least "group data" and "access rights" of this group must be defined!




 **4.1.1 Group Data and 4.1.2 Access Rights**

## 4. Group



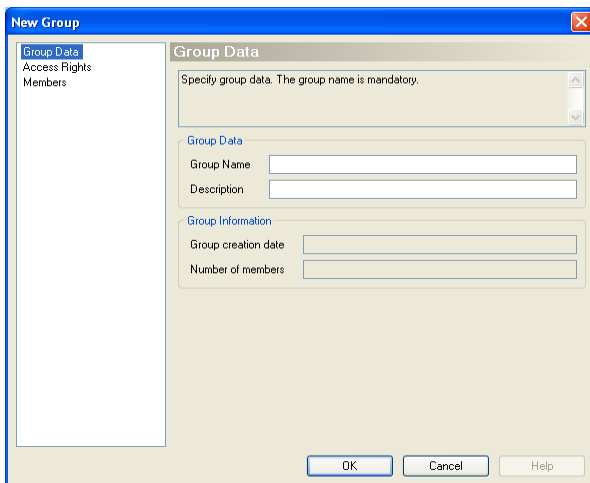
 By reimporting any elproLOG ANALYZE software modules, you have got the possibility to set the access rights of both groups back to their original values. These values are predetermined by ELPRO. Any other settings won't be changed at all.

 [5.2 Import Application-Set / Default Groups & Permissions](#)

### 4.1 Add / Edit Group



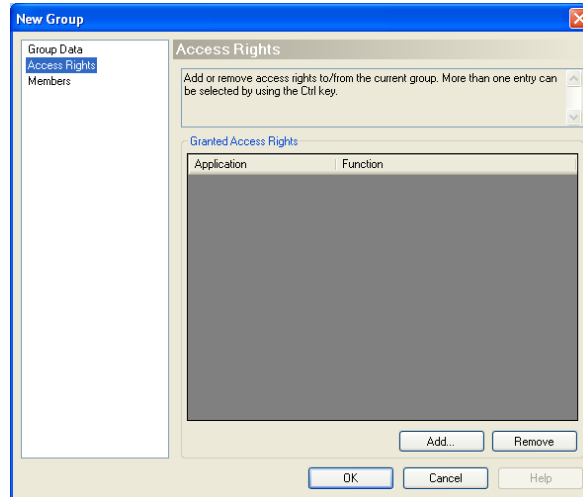
#### 4.1.1 Group Data



Only this information is mandatory

**Group name**

## 4.1.2 Access Rights




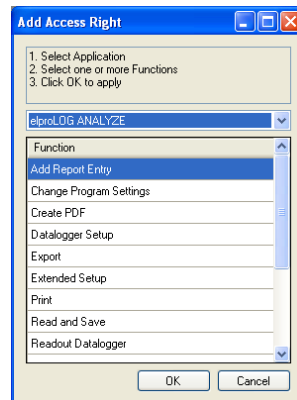
For details see the descriptions in this window



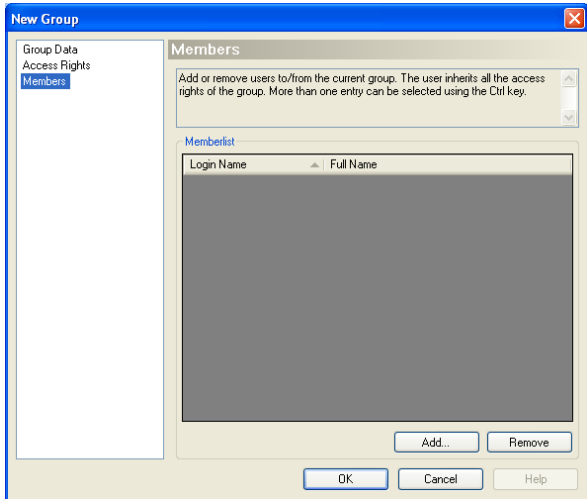
### Button "Add..."

Prior these rights could be assigned, the "Application-Set" has to be imported.

 [5.2 Import Application-Set](#)



### 4.1.3 Members

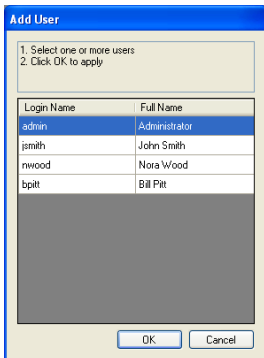


*For details see the descriptions in this window*



#### Button "Add..."

Prior a user could be assigned to a group, At least "User Data" and "Account Details" of this user must be defined!



3.1.1 User Data and 3.1.2 Account Details

## 5. Tools

### 5.1 Documentation



There are 2 different types of documentations available:

- Access rights documentation
- User accounts documentation

#### Documentation Icons

The following icons are used to handle to different functions within the documentation window:




1. *Export of a documentation into different file formats*
2. *Printing*
3. *Update of the report*
4. *1st page*
5. *1 page backward*
6. *1 page forward*
7. *Last page*
8. *Jump on page*
9. *Search*
10. *Zoom*

## 5.1.1 Example of an access rights documentation

### Access Rights Documentation

Application: elproLOG USER, Version 1.0.1.0  
 Database: M:\Entwicklung\Dokumentation\Anleitungen\SU elproLOG USER\Datenbank\docu.elproUDB



---

**Group: Default Supervisors**

Group Name: Default Supervisors  
 Group Created: 01.01.1970 00:00:00  
 Description: Default Supervisor Group

**Access Rights**

Application	Function	Code
elproLOG USER	Run program and manage users	16'001
elproLOG ANALYZE	Run Program	11'001
elproLOG ANALYZE	Readout Datalogger	11'002
elproLOG ANALYZE	Datalogger Setup	11'003
elproLOG ANALYZE	Extended Setup	11'004
elproLOG ANALYZE	Save / Save as	11'005
elproLOG ANALYZE	Export	11'006
elproLOG ANALYZE	Send mail	11'007
elproLOG ANALYZE	Print	11'008
elproLOG ANALYZE	Create PDF	11'009
elproLOG ANALYZE	Add Report Entry	11'010
elproLOG ANALYZE	Save Zoom	11'011
elproLOG ANALYZE	Change Program Settings	11'012
elproLOG ANALYZE	Read and Save	11'013

**Members**

Login Name	Full Name
admin	

---

**Group: Default Operators**

Group Name: Default Operators  
 Group Created: 01.01.1970 00:00:00  
 Description: Default Operator Group

**Access Rights**

Application	Function	Code
elproLOG ANALYZE	Run Program	11'001
elproLOG ANALYZE	Readout Datalogger	11'002
elproLOG ANALYZE	Save / Save as	11'005
elproLOG ANALYZE	Export	11'006
elproLOG ANALYZE	Send mail	11'007
elproLOG ANALYZE	Print	11'008
elproLOG ANALYZE	Create PDF	11'009
elproLOG ANALYZE	Add Report Entry	11'010
elproLOG ANALYZE	Read and Save	11'013


**Members**

Login Name	Full Name
andreas	

Printed: 29.07.2008 / agubler

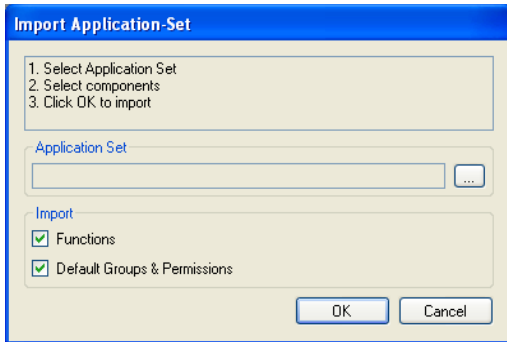
Page 1 / 1

## 5.1.2 Example of a user accounts documentation

User Accounts Documentation						
Application:	elproLOG USER, Version 1.0.1.0					
Database:	M:\Entwicklung\Dokumentation\Anleitungen\SU elproLOG USER\Datenbank\docu.elproUDB					
<b>User: admin</b>						
Login Name:	admin					
Full Name:						
Remarks:	Default Administrator					
Phone Number:						
Fax Number:						
E-Mail Address:						
Company:						
Account created:	01.01.1970 00:00:00					
Account Expire Date:	---					
Account Locked:	no					
Last Login:	29.07.2008 08:43:21					
Number of Failed Logins:	0					
Password Changeable:	yes					
Password Never Expires:	yes					
Password Expire Date:	---					
<b>Member of</b>						
<table border="1" style="width: 100%;"><thead><tr><th>Group Name</th><th>Description</th></tr></thead><tbody><tr><td>Default Supervisors</td><td>Default Supervisor Group</td></tr></tbody></table>	Group Name	Description	Default Supervisors	Default Supervisor Group		
Group Name	Description					
Default Supervisors	Default Supervisor Group					
<b>User: andreas</b>						
Login Name:	andreas					
Full Name:						
Remarks:						
Phone Number:						
Fax Number:						
E-Mail Address:						
Company:						
Account created:	29.07.2008 08:51:18					
Account Expire Date:	---					
Account Locked:	no					
Last Login:	---					
Number of Failed Logins:	0					
Password Changeable:	yes					
Password Never Expires:	no					
Password Expire Date:	27.09.2008 08:51:18					
<b>Member of</b>						
<table border="1" style="width: 100%;"><thead><tr><th>Group Name</th><th>Description</th></tr></thead><tbody><tr><td>Default Operators</td><td>Default Operator Group</td></tr></tbody></table>	Group Name	Description	Default Operators	Default Operator Group		
Group Name	Description					
Default Operators	Default Operator Group					
Printed: 29.07.2008 / agubler						
Page 1 / 1						



## 5.2 Import Application-Set



A new defined database doesn't contain any information about the software modules to be managed. As first step the application-sets of all used elproLOG ANALYZE software modules have to be imported.

Select the application-set (xxx.elproUAS) of the desired software module. This information is kept in the same directory as the software has been installed.

**1. Select application-set**

- **Functions**  
After the import, the access rights for the new application have to be assigned to each group manually
- **Default Groups & Permissions**  
The access rights of both default groups will be set back to factory defaults. These values are predetermined by ELPRO.

**2. Select components**

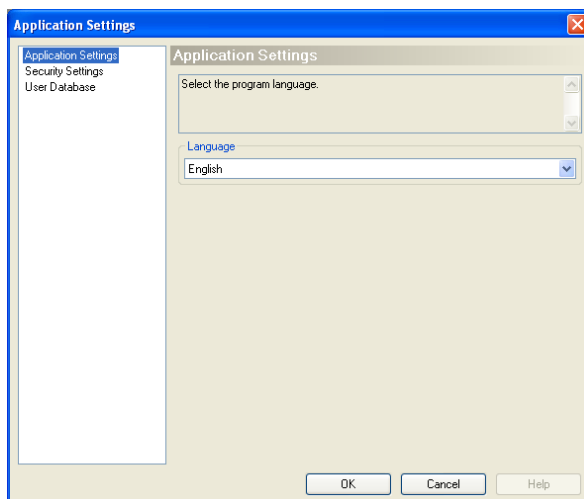
**3. Click "OK" to import**

## 5.3 Settings



THESE SETTINGS ARE VALID FOR ALL USERS AND GROUPS WHICH ARE ASSIGNED TO THE SELECTED DATABASE.

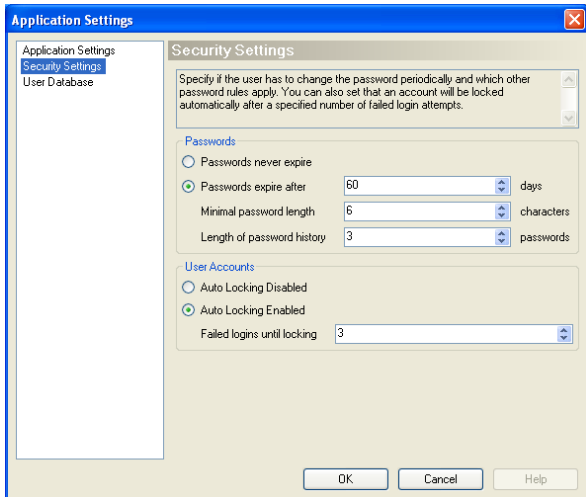
### 5.3.1 Program Settings



*For details see the  
window related  
comment*



### 5.3.2 Security Settings



The user is forced to change his password, otherwise he won't be able to login into any elproLOG ANALYZE software modules he is assigned to, anymore.

- Default: 6 characters
- The used length of the password depends on internal security rules.

Determines the number of password changes required till the first password could be used again.

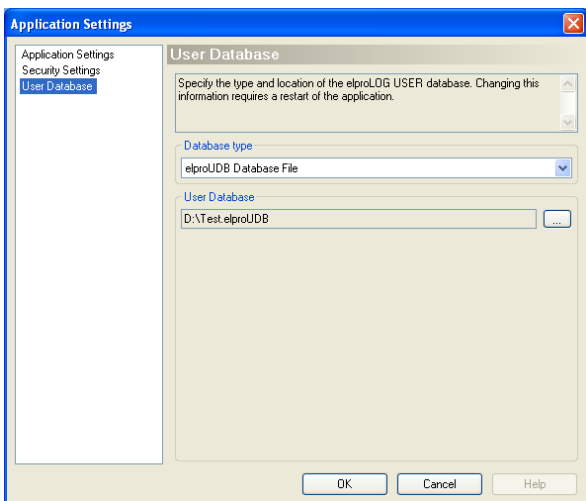
**Passwords expire after**

**Minimal password length**

**Length of password history**

*For further details see also the window related comments*

### 5.3.3 User Database



*For details 3.1 Add / Edit User*

**TO CHANGE THE DATABASE, LOCAL ADMINISTRATOR RIGHTS ARE REQUIRED!**

## 6. Information for Customer Support

If you need further assistance from the ELPRO - Customer support, supply us with the following information please:

Select in the menu  
"Help" the menu item  
"Info".



- Version number of the software  
The software is delivered on a CD-ROM with the following designation: 1.x.y  
The current version number of the software is shown by the ReadMe file.
- version and type of the used operating system.
- Designation of the used elproLOG ANALYZE application and / or datalogger, with which problems arise.
- Do the same problems arise with other elproLOG ANALYZE application and / or datalogger?
- Which were the preceding actions, before problems arose (exact description of your datalogger application: time, temperature, shock .....).
- Exact definition of the error occurred: copies of the status report, the graphic and the communication history or send us an email containing the read-out data if possible.

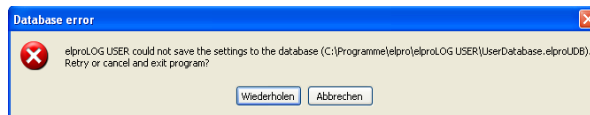
### 6.1 Database Error Messages

#### Reasons

- For some reasons the elproLOG USER database has been deleted, moved or is corrupted.
- If the database has been installed on a server, check the server access also.



Please confirm these  
messages and select  
or define a new  
database



### 6.2 Loss of Password

If the administrator password has been lost, the existing database could not be changed anymore.



# Index

## A

Access right 12  
Account 9, 19  
Account expire date 9, 19  
Application-Set 17

## C

Customer Support 20

## D

Database 4, 19, 20  
Default groups 5  
Default user 5

## G

Group 5, 10, 18

## L

Language 18

## M

Member 5, 10

## P

Password 7, 9, 19, 20  
Password for installation 4  
Password length 19

## R

Release 5, 20  
Reset password 9

## U

User 5, 18  
Username for installation 4

# Revision History

Author	Date	Version	Description
A. Gubler	06. 05.2009	--	1. Release



(Head Office)  
ELPRO-BUCHS AG  
Langäulistrasse 62  
CH-9470 Buchs SG  
Switzerland  
email: [swiss@elpro.com](mailto:swiss@elpro.com)



ELPRO Messtechnik GmbH  
Baumwasenstrasse 20/1  
D-73614 Schorndorf  
Germany  
email: [brd@elpro.com](mailto:brd@elpro.com)



ELPRO Services Inc.  
210 Millcreek Road  
P.O. Box 727  
Marietta, OH 45750  
USA  
email: [usa@elpro.com](mailto:usa@elpro.com)

ELPRO UK Ltd.  
Unit 1, Allen's Yard  
Nyton Road, Aldingbourne  
Chichester West Sussex  
PO20 3UA  
United Kingdom  
email: [uk@elpro.com](mailto:uk@elpro.com)

[www.elpro.com](http://www.elpro.com)  
[www.pdf-datalogger.com](http://www.pdf-datalogger.com)