



[www.elpro.com](http://www.elpro.com)

The Datalogger Company

# HAMSTER-A and HOTDOG

ELPRO dataloggers for extreme conditions



ELPRO-BUCHS AG  
CH-9471 Buchs SG  
Switzerland  
home: [www.elpro.com](http://www.elpro.com)





HOTDOG and its enhanced and compatible companion HAMSTER-A are proven performers under harsh conditions. Watertight and virtually indestructible, HAMSTER-A and HOTDOG are the ideal instruments for documentation for applications in tough environments.

The dataloggers can be submerged to a maximum depth of 10 meters, or can also be buried directly into the soil. One application may be to leave the datalogger during the cleaning process of your cooling chamber using superheated steam.

The measurement values of the internal temperature sensor are stored in the memory and can be analysed and printed out at any time. Using the elproLOG software and PC interface, the data can be transferred easily to any PC using infrared communication.



**HAMSTER-A AT1**

**Part no. 4500**

- Large memory for 64'000 data points
- Operating temperature: -40°C... +70°C (data logging)
- Measuring clock: from 1 minute till 3 hours
- Washable, rugged and shock resistant housing
- Requires elproLOG version 3.31 or higher



**HOTDOG DT1**

**Part no. 2201**

- Memory for 16'000 data points
- Operating temperature: -40°C... +70°C (data logging)
- Measuring clock: from 2 seconds till 3 hours
- Washable, rugged and shock resistant housing



**Part no.: 2302**

PC-Interface for HAMSTER-A and HOTDOG datalogger  
incl. elproLOG evaluation software and connection cable



**Part no.: 2802**

Security mounting bracket, for HAMSTER-A and HOTDOG, stainless steel, lockable, 4 snap locks included, with InPosition marking (shows the time, the datalogger was positioned in the bracket)



**Part no.: 2816**

Simple mounting bracket for HAMSTER-A and HOTDOG, stainless steel



### Technical Data HAMSTER-A AT1

Time range: programmable, 1 min - 3 hrs  
Accuracy: see diagram  
Resolution: 0.1°C (-20°C... +70°C)  
Operating Temp.: -40°C... +70°C (data logging)  
0°C... +50°C (data transfer to PC)

Housing: ABS, SAN, welded  
Weight: 120g  
Sealed: IP68, watertight  
Battery life: 5 years, depending of use  
Battery changeable by ELPRO service only!

Magnetic interference: Module is switched on for data transfer by a magnetic field.

Calibration certificate included

### Technical Data HOTDOG DT1

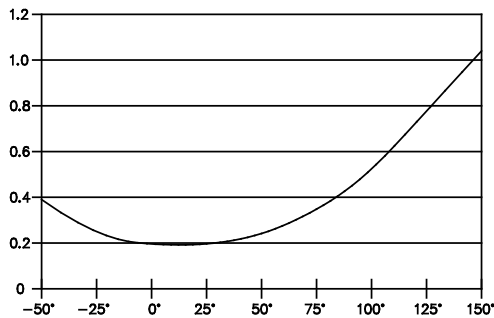
Time range: programmable, 2 s - 3 hrs  
Accuracy: see diagram  
Resolution: 0.1°C (-20°C... +70°C)  
Operating Temp.: -40°C... +70°C (data logging)  
0°C... +50°C (data transfer to PC)

Housing: SAN welded  
Weight: 170g  
Sealed: IP68, watertight  
Battery life: 5 years, depending of use  
Battery changeable by ELPRO service only!

Magnetic interference: Module is switched on for data transfer by a magnetic field.

Calibration certificate included

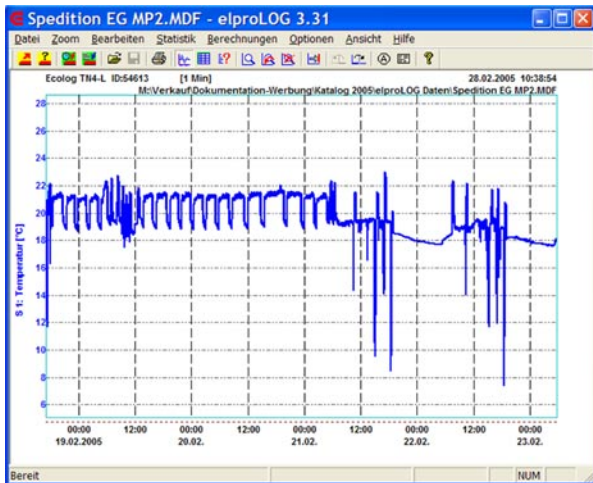
### Accuracy of NTC temperature sensors



### Inscription Area

Please attach no markings or labels outside of the designated inscription area as this may interfere with the infrared data communication.





### elproLOG evaluation software functions

- Programming for all ELPRO dataloggers
- Data readout from datalogger
- Hardcopies of all screens with print preview
- Clearly laid-out graphs and tables
- Min, max values displayed
- Status printout with information about the datalogger
- Statistical data, histogram representation
- Data and graph export
- E-mail: send data file via e-mail to receiver

## elproLOG, the PC software for all ELPRO dataloggers

elproLOG is an easy-to-use software for fast, efficient data evaluation and reporting.

Using elproLOG, the measured values can be transferred easily to the PC and displayed either in graphical or tabular form. The software helps you comply with the provisions of FDA 21 CFR Part 11, GMP, GAMP4 and GLP.

### elproLOG software

**Part No. 2338-CDV full version**

**Part No. 2338-CDU update**

### elproLOG QLS Software for FDA, GLP, GMP

**Part No. 2339-BL, basic license**

**Part No. 2339-FL, follow license**

for all Windows PCs:

W98, WNT4, W2000, XP

Automatic installation from the CD



Available as EEx models

### ECOLOG allround datalogger

For temperatures (NTC and PT100) from -200°C .. +550°C, relative humidity 0%..100%, programmable alarm functions, one-year memory capacity (64,000 measured values), large display and multifunctional keypad.



### The ECOLOG NET logger

LAN/WLAN datalogger for monitoring temperature, humidity and 4..20mA signals. Multi-channel logger system with high data security and alarm features. The ECOLOG-NET is the foundation of the ELPRO Central Monitoring System.



### All-purpose datalogger HOTBOX-SE

Ideal for service technicians to use at locations where fast, uncomplicated logging of process data is required. The datalogger measures parameters as temperature, humidity CO2, differential pressure and various signals.



### HOTBOX HTH

Humidity and temperature up to 105°C. Stand-alone datalogger for high temperatures, robust aluminum casing, memory capacity for 64,000 measured values.

Contact us for information about dataloggers, sensors, accessories and alarm devices.

#### Head Office:

**ELPRO-BUCHS AG**  
Langäulistrasse 62  
CH-9471 Buchs SG  
Switzerland

Tel: +41 81 750 03 11  
Fax: +41 81 750 03 17  
email: [swiss@elpro.com](mailto:swiss@elpro.com)  
home: [www.elpro.com](http://www.elpro.com)

**ELPRO MESSTECHNIK GmbH**  
Baumwasenstrasse 20/1  
DE-73614 Schorndorf  
Germany

Tel: +49 7181 97 94 80  
Fax: +49 7181 97 94 85  
email: [brd@elpro.com](mailto:brd@elpro.com)  
home: [www.elpro.com](http://www.elpro.com)